

Other Components

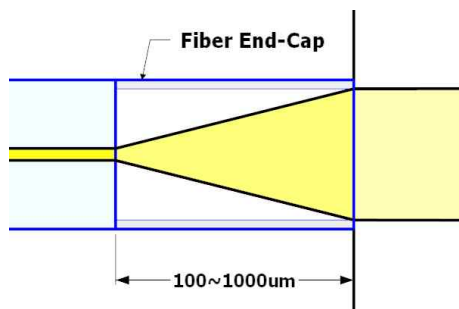
Fiber End-Cap

For end caps with a similar diameter to that of the fiber, a larger cored fiber, typically “coreless” or “graded index” fiber is spliced to single-mode or multi-mode transmitting.

The process requires the ability to cleave large fibers, splice the fibers to the end cap, and precisely cleave the end cap.



Fiber End-Cap (FC/APC-Pigtail)



Multi Focus - End View



Single Focus - End View

Order Information

Add: Huscent 221,226 Cheomdangwagi-ro, Buk-gu, Gwangju, Korea
 E-mail: huscent@naver.com ☎ Tel: 82-62-975-7301 Fax: 82-62-975-7302

Other Components

Thermally Expanded Core

Thermally-Expanded Core Increases Mode Field Diameter (MFA) for Easier Coupling



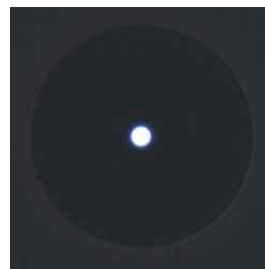
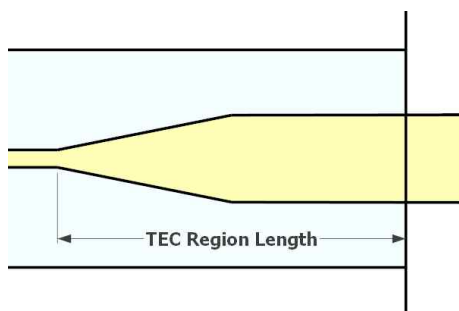
TEC (Ferrule-Pigtail)

Features

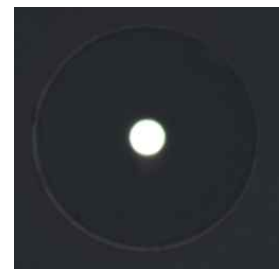
- Low Excess Loss
- Large Expanded Region
- Available in various MFD sizes

Applications

- Power Coupling
- Fiber Optic Sensor
- High Power Connectors



SMF-28e+



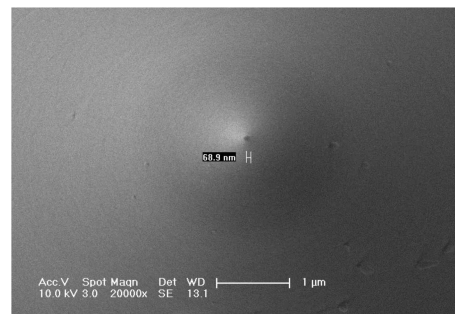
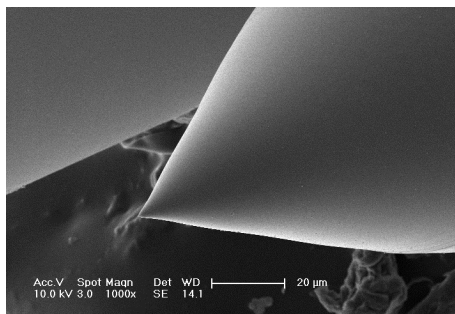
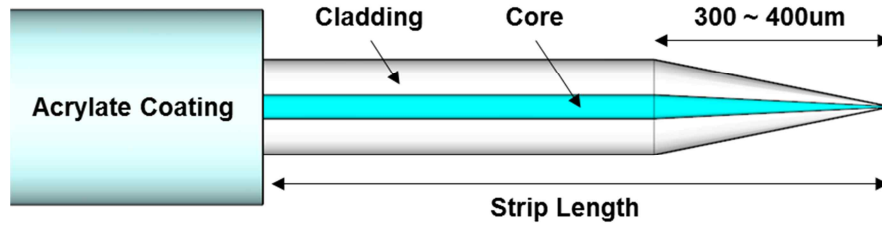
TEC Fiber

Order Information

Add: Huscent 221,226 Cheomdangwagi-ro, Buk-gu, Gwangju, Korea
 E-mail: huscent@naver.com ☎ Tel: 82-62-975-7301 Fax: 82-62-975-7302

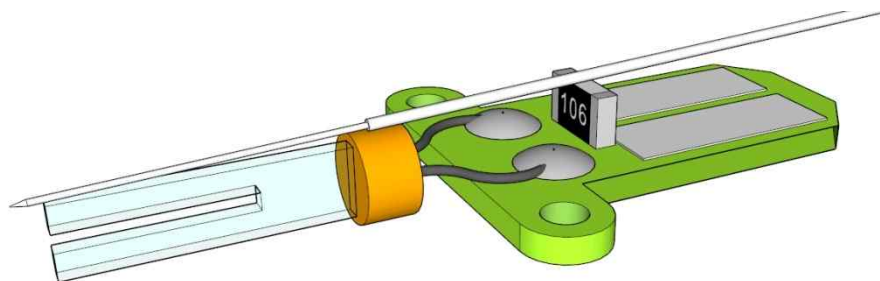
Other Components

Fiber Probe



Material	Single mode optical fiber: 460-HP, 630-HP, 780-HP, 980-HP, etc.
Clad Diameter	125 ± 1.5 [um]
Coating Diameter	245 ± 15 [um]
Tip aperture	~ 100 [nm]
Tip curvature radius	25 ± 5°
Maximum optical input Power	~ 400 micorWatt

* The probes are prepared by chemical etching method.



Fiber Probe – Tuning Fork

Order Information

Add: Huscent 221,226 Cheomdangwagi-ro, Buk-gu, Gwangju, Korea
 E-mail: huscent@naver.com ☎ Tel: 82-62-975-7301 Fax: 82-62-975-7302